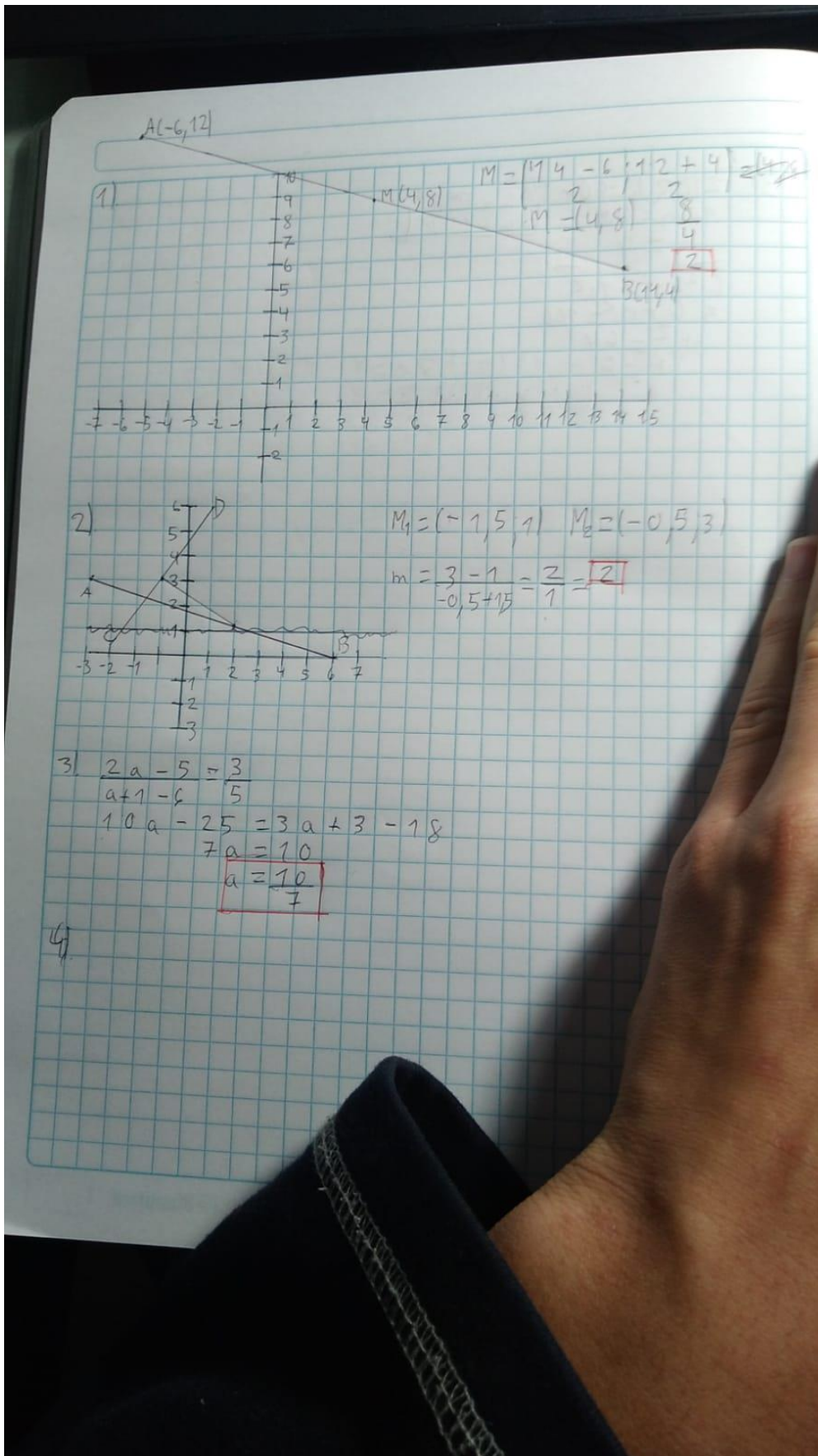


Trabajo de plano cartesiano y la recta



$$\begin{aligned} 5) \quad 0 &= 1 - 2n - x - y + 8 & 1 - 2n &= -3 \\ 0 &= 3x + y - 4 & -2n &= -4 \\ 0 &= 3x - y + 4 & 4n &= 2 \end{aligned}$$

$$\begin{aligned} 6) \quad 0 &= (a+1)x + by - 46 & \frac{a+1}{2a-3} &= \frac{6}{2b-1} \\ 0 &= (2a-3)x + (2b-1)y - 7 & 2a+2b-a-1 &= 2a-3b \\ & & 5b-a &= 1 \end{aligned}$$

$$\begin{aligned} 7) \quad \frac{-9}{2a-5} \cdot \frac{-1}{2a+5} &= -1 \\ \frac{9}{4a^2-25} &= -1 \\ 9 &= 4a^2 - 25 \\ 4a^2 &= 34 \end{aligned}$$

$$\begin{aligned} 2 \cdot 4 &= 4a^2 \\ \sqrt{6} &= a \end{aligned}$$

$$\begin{aligned} 8) \quad a - 5 &= 1 \\ -2a - 7 & \\ a - 5 &= 2a - 7 \\ -2 &= a \end{aligned}$$

