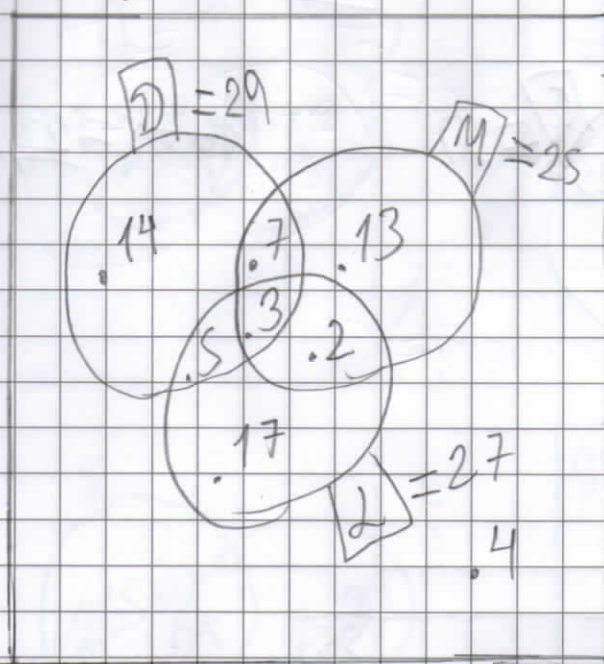


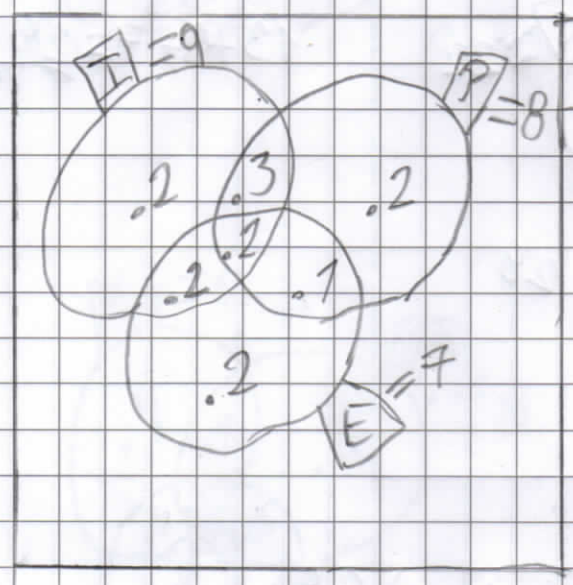
Examen problema con conjuntos:

1.



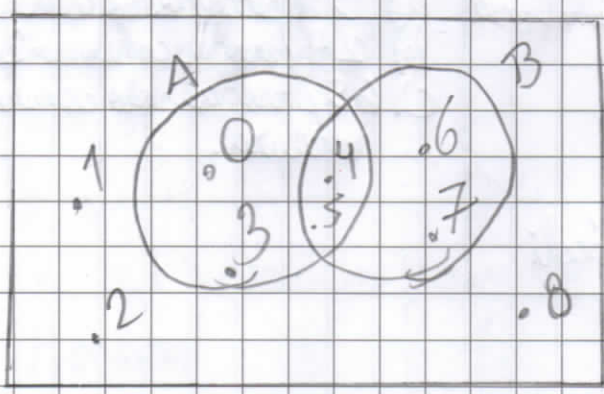
$X = 65$   
 $29 + 15 + 17 + 4 = X$   
 $65 = X$

2.



$X = 14$   
 $9 + 5 = X$   
 $14 = X$

3.



a) Elementos que sólo pertenecen a B.

6 y 7. Suma: 13

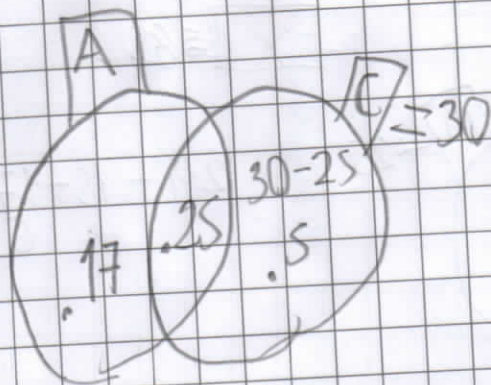
b) Elementos que pertenecen a A ∩ B.

0; 3; 4; 5; 6; 7. Suma: 25

c) Elementos que pertenecen a A y B.  
 Suma: 9, 4 y 5

4.

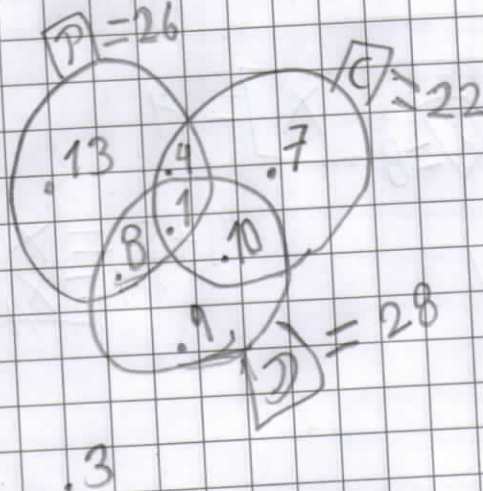
47



$$17 + 5 = 22 //$$

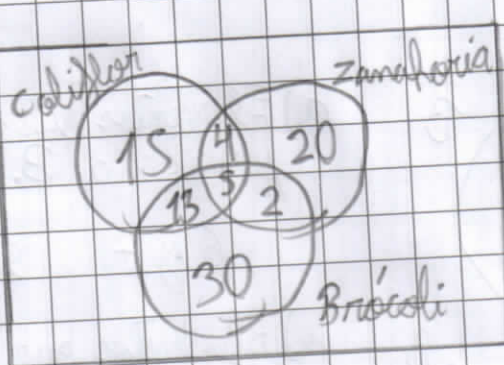
5.

55



$$13 + 9 + 7 = 29 //$$

6.

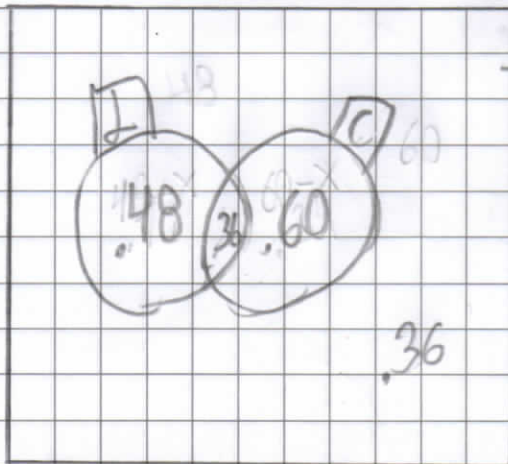


- a) 39 personas no comen B.
- b) 24 personas consumen 2 o 3
- c) 65 personas solo consumen verduras.





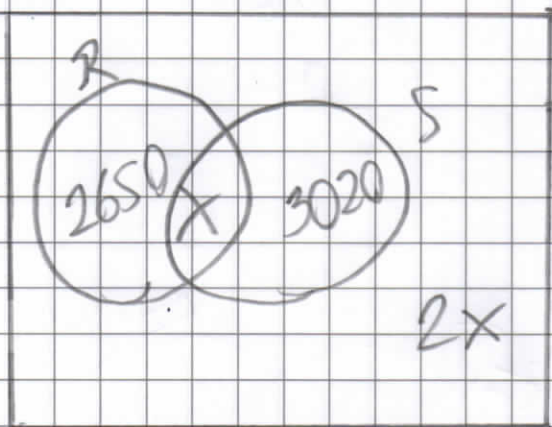
7.7.



$$60 + 48 + 36 = 144 = 180 - 36$$

$$180 - 144 = 36$$

8.



8070

No SyR = Si SyR

No SyR = 2x

$$2650 + X + 3020 + 2x = 8070$$

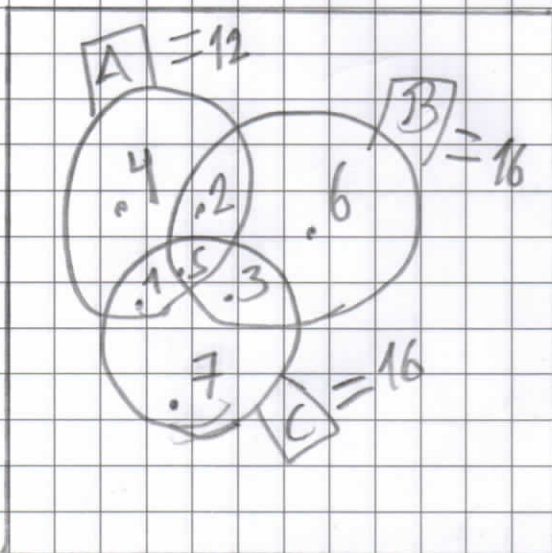
$$5670 + 3x = 8070$$

$$3x = 8070 - 5670$$

$$3x = 2400$$

$$2(800) = 1600 // X = 800$$

9.



$$6 + 4 + 7 = 17$$

10.

	Si practican	No practican	Total
Hombres	8	12	20
Mujeres	13	7	20
Total	21	19	40

7 // mujeres no practican natación.